

VST-39/43/50/55-TN

Articulated/Telescopic Aerial Device

WORKING HEIGHT: Up to 59 ft 7 in (18.2 m)

HORIZONTAL REACH: Up to 30 ft 7 in (9.3 m)

PLATFORM CAPACITY: Up to 500 lbs (227 kg)

JIB & WINCH
Optional

**LARGE
TOP-MOUNTED
STEEL
PLATFORM**
36 in x 60 in x 43 in



VST-50-TN model shown here.



VERSALIFT is a leading global manufacturer of bucket trucks, digger derricks, cable placers and other specialty equipment for use in the power generation, transmission and distribution, investor-owned utility, telecommunications, bridge inspection, light and sign, and forestry industries. Providing equipment sales, service, training, warranty and financing to government agencies, corporations, contractors, co-ops and municipalities through its global network of facilities and distributors, the company employs more than 900 employees worldwide.

VST-39/43/50/55-TN



Articulated/Telescopic Aerial Device

GENERAL SPECIFICATIONS:

(Based on 40 in Frame)

	VST-39-TN	VST-43-TN	VST-50-TN	VST-55-TN
Horizontal Reach	26 ft (7.9 m)	30 ft (9.1 m)	30 ft 7 in (9.3 m)	30 ft 2 in (9.2 m)
Maximum Platform Capacity	500 lbs (227 kg)	500 lbs (227 kg)	500 lbs (227 kg)	500 lbs. (227 kg)
Platform Rotation	180°	180°	180°	180°
Inner Boom Extension	79 in (2.0 m)	103 in (2.6 m)	103 in (2.6 m)	53 in (1.35 m)
Outer/Inner Boom Articulation	-25° to +85°	-25° to +85°	-25° to +85°	-25° to +85°
Lower Boom Articulation	0° to +87°	0° to +87°	0° to +84°	0° to +84°
Rotation	360° Continuous	360° Continuous	360° Continuous	360° Continuous

WITH STANDARD PEDESTAL:

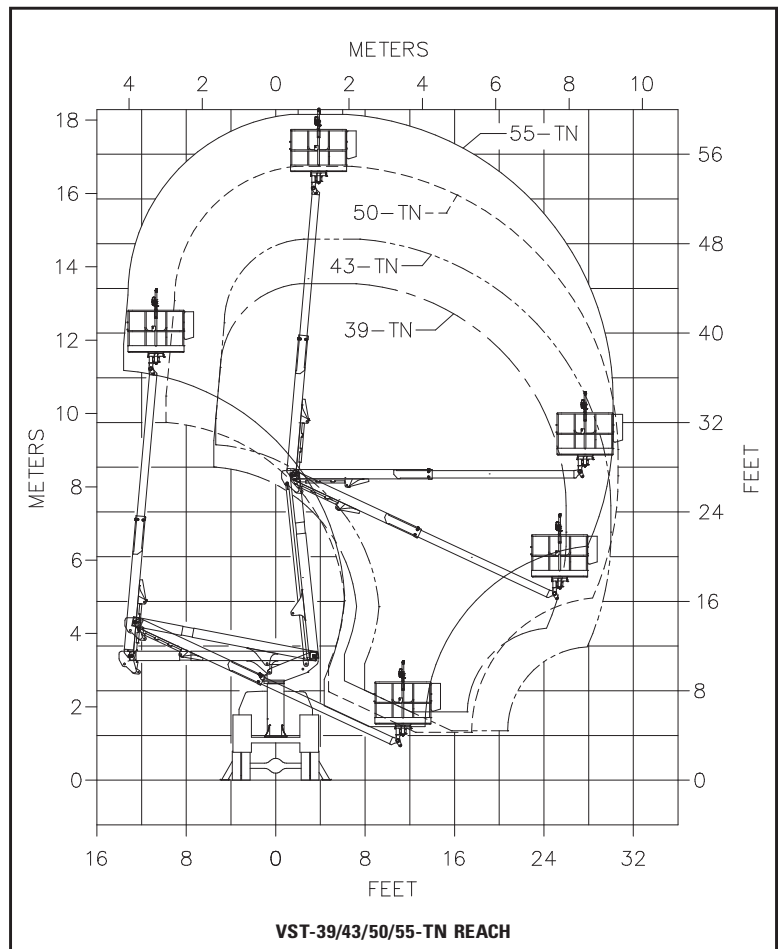
Height to Bottom of Platform	39 ft 5 in (12.0 m)	43 ft 5 in (13.2 m)	49 ft 11 in (15.2 m)	54 ft 7 in (16.6 m)
Working Height	44 ft 5 in (13.5 m)	48 ft 5 in (14.8 m)	54 ft 11 in (16.7 m)	59 ft 7 in (18.2 m)
Stowed Travel Height	10 ft 6 in (3.2 m)	10 ft 6 in (3.2 m)	11 ft 0 in (3.4 m)	11 ft 6 in (3.5 m)

HYDRAULIC SYSTEM:

Operating Pressure	3000 psi (207 bar)
Flow Rate	6 gpm (22.7 lpm)
Filtration	10 micron pressure 10 micron return 100 mesh suction
System Type	Open Center

OPTIONS:

- Automatic Boom Latch
- Auxiliary Outriggers
- Backup 12-Volt Pump
- Jib up to 200 lb (90 kg) Capacity
(Reduces Platform Capacity)
- Lift Eye (1000 lb max)
- Second Set of Tool Power Ports
- Engine Throttle Control
- Various Pedestal Heights
- 120-Volt Outlet at Platform



Note: Specifications on units may vary or change without prior notifications due to option selections.

REV. 04/19



| 7601 Imperial Drive | Waco, Texas 76712 | 254.399.2100 | VERSALIFT.com