

V60 HIREACH



EQUIPMENT COMPANY

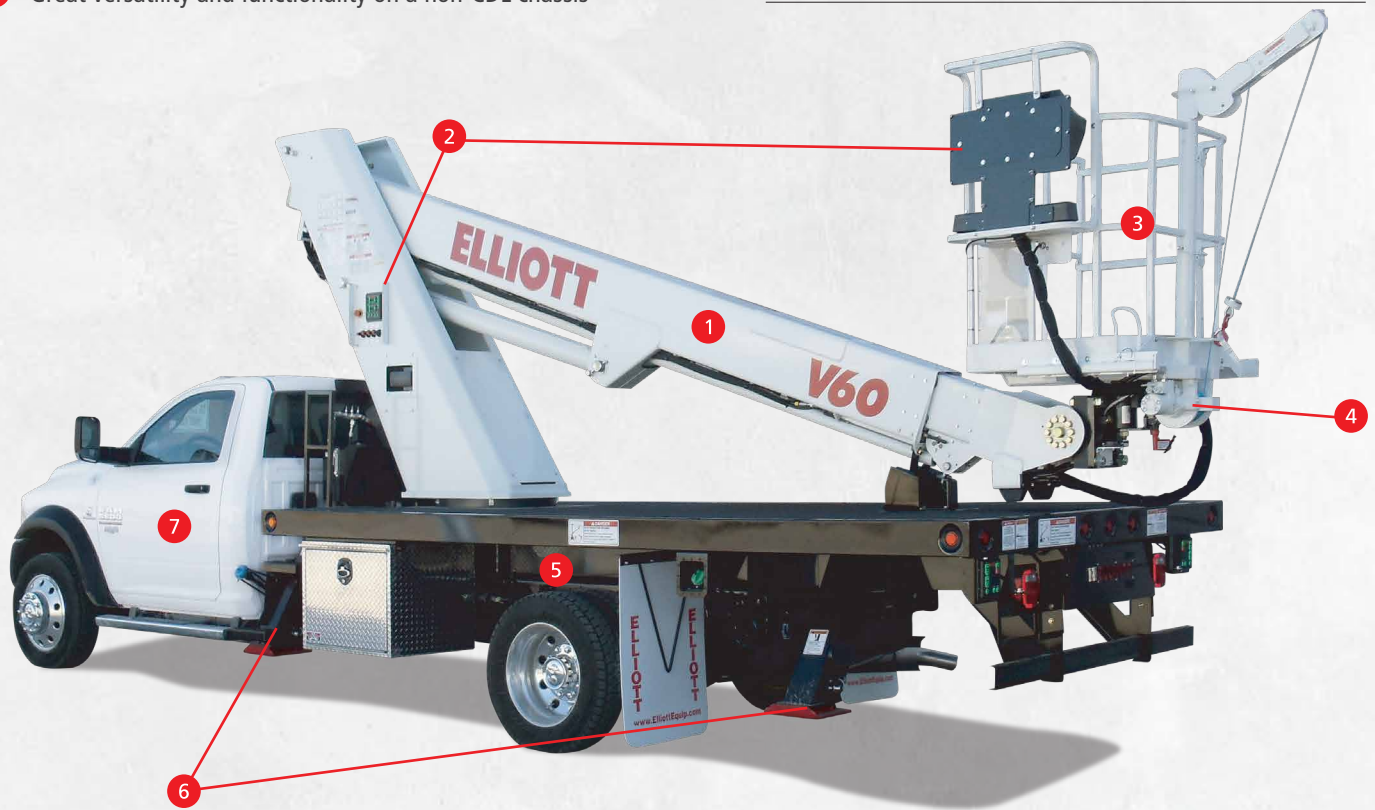
Built for You.

KEY FEATURES

- 1 Telescopic three-section boom with smooth 'point and shoot' functionality
- 2 SMARTControl system provide smooth, precise operation and remote diagnostics
- 3 Top-mounted two-person steel work platform
- 4 New design allows 1,000 lb material handling or 500 lb jib
- 5 Full length subframe for unmatched reliability
- 6 Narrow hydraulic outriggers allow full setup in 9' wide space
- 7 Great versatility and functionality on a non-CDL chassis

TECHNICAL SPECS

WORKING HEIGHT	63' / 19,2 m
SIDE REACH	38' / 11,6 m
PLATFORM CAPACITY	500 lb / 227 kg
PLATFORM SIZE	30" x 40" / 76 x 102 cm
MAIN WINCH CAPACITY	1,000 lb / 453 kg
JIB WINCH CAPACITY	500 lb / 227 kg
FRONT OUTRIGGER SPREAD	9' / 2,7 m
REAR OUTRIGGER SPREAD	9' / 2,7 m
MINIMUM GVWR	19,500 lb / 8845 kg



SMARTControl System

Provides touchscreen/ manual button operation, smooth and precise upper controls and Bluetooth connectivity to Elliott service.



High Capacity Boom Winch

The 1,000 lb material handling winch option converts the HiReach into a combination aerial work platform and material handler.



Narrow Outrigger Spread

An 9 foot spread provides full 360 degree operation, allowing setup in areas as tight as a single parking stall.



Compact and Versatile Design

Engineered to be installed on a 19,500 lb GVWR truck with plenty of room for toolboxes and storage.



FEATURES

Work Platform: Electronic self-leveling and rotating steel 30" x 40" top-mounted work platform. Features 180 degrees of rotation. Includes upper control station with touchscreen and redundant button control to allow operation with gloves on.

Hydraulic System: Hydraulically powered continuous rotation mechanism. Holding valves on all cylinders. 12V Emergency pump.

Control System: Control switch console mounted to turret. Proportional paddles provide control for boom functions and winch. Switches control platform leveling, platform rotation, engine speed, engine start/stop, horn and emergency stop. Four proportional electric joysticks mounted in platform provide boom extension, lift, rotation and optional jib winch. Auto boom stow allows the operator to stow the boom with the touch of a button.

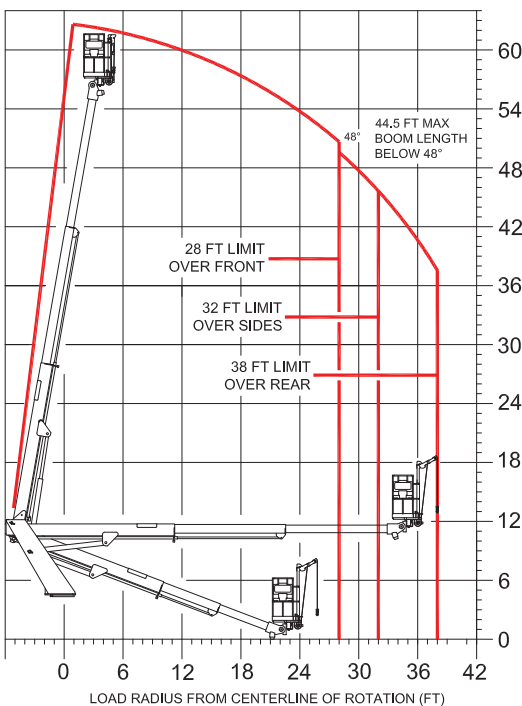
High Capacity Boom Winch: Versatile winch design allows for 1,000 lb material handling or easily converts to 500 lb jib in the platform.

Outriggers: "A" type hydraulically powered front and rear outriggers with 9' spread. Outrigger controls at ground level. 360 degree stability.

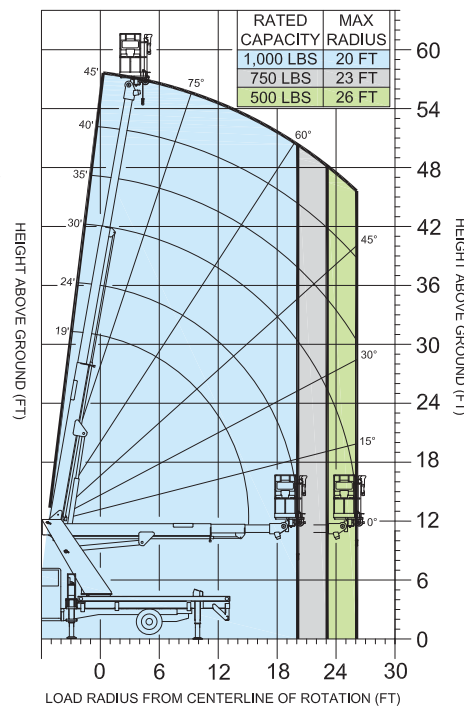
Certification: Certified to ANSI A92.2 for Vehicle-Mounted Elevating and Rotating Aerial Devices.

**Specifications are subject to change.*

AERIAL PLATFORM WORKING RANGE



MAIN HOIST LOAD RATINGS



AVAILABLE OPTIONS

500 lb Capacity Stowable Jib Winch in the Work Platform

1,000 lb Capacity Main Winch

110V Line to the Work Platform

(2) Sign Forks on Work Platform

Cold Climate Hydraulic Oil Heater

Steel, Wood or Aluminum Flatbeds

Steel, Aluminum or Fiberglass Service Bodies

Steel or Aluminum Toolboxes

Composite or Wooden Outrigger Pads

Spanish/Metric Charts

Painted White, Red or Custom Colors

Radio Remote Controls

Much More...