

VAN LADDER®

AERIAL EQUIPMENT



3928-HD

ALL ELECTRIC



VAN LADDER®

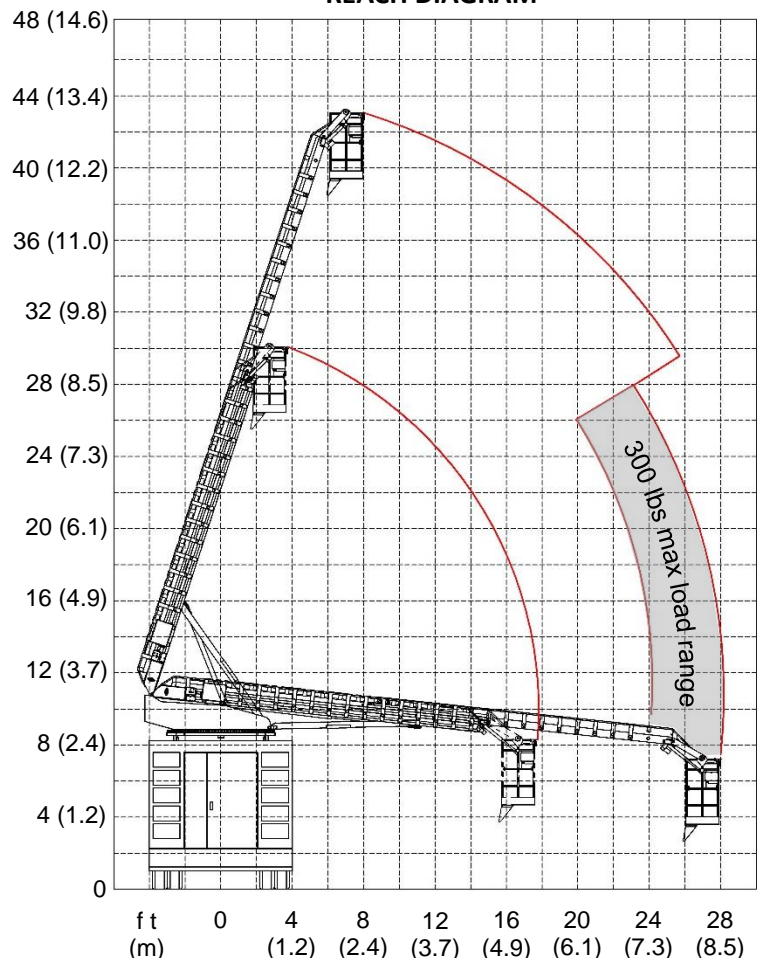
SPECIFICATIONS - 2017

FEATURES

- 24VDC battery bank allows operation of unit without vehicle running = zero emissions.
- Independent motors for all functions optimize energy efficiency
- Charge system replenishes battery bank when vehicle is running (Optional 110V overnight charger also available)
- Durable light weight design for optimal payload and fuel efficiency
- No significant reduction of cargo space
- Typical installations require no outriggers
- Automatic bucket leveling system, utilizing linear actuator
- 360 degree continuous rotation
- Quality finished components for superior corrosion protection
- Environmentally sealed electronic components
- Ground Controls hardwired with 30ft coil cord for remote maneuvering
- Ground controls include bucket override function and emergency stop switch
- Emergency Stop switch located in bucket stops functions from all control locations
- Hydraulic cylinder with integrated load holding valve for maximum safety
- Non-skid surfaces on all rungs and platforms
- Fall arrest anchorage point for operator in bucket
- Meets or exceeds ANSI A92.2 standards
- Can be transferred easily to another vehicle
- Optional accessories include:
 - 110V power outlet at bucket
 - Bucket tool and parts holders
 - Material handling devices
 - Light bulb and ballast containers
 - Safety beacons
 - Interior shelving for optimized storage

Model 3928-HD	
Working height (typical) ^a	45 ft (13.7 m)
Height to bottom of bucket ^a	39.5 ft (12 m)
Horizontal reach	28 ft (8.5 m)
Stowed travel height ^a	11.8 ft (3.6 m)
Bucket capacity	350 lbs (136 kg)
Approx. unit weight ^b	2100 lbs (952 kg)
360 deg. continuous rotation	Yes
Front bumper bucket entry	Yes
Ground level bucket entry	Yes
Max. acceptable ground slope	5 deg.
Minimum Vehicle Requirements:	
Cutaway Van/ Truck Chassis	11,500lb GVWR
^a Based on 100" Box Height	
^b Weight based on typical installation	

REACH DIAGRAM



BRINK'S MFG. CO.

75351 255th Street
Clarks Grove, MN 56016

Tel: 888-887-5847

Fax: 507-826-3814

www.vanladder.com